

FIS SKI WORLD CUP | 22/23.01.2022 | CORTINA D'AMPEZZO



CORTINA
FIS SKI WORLD CUP



FEDERAZIONE ITALIANA
SPORT INVERNALI



LONGINES



MEDIA KIT

CORTINA SKI WORLD CUP 2022

SPONSOR TECNICI



MEDIA CENTRE

The following services will be available at the Media Centre, located at the Alexander Girardi Hall Congress Centre (via Marangoi 1):

- Media Accreditation desk
- Media Workroom
- Press Conference room
- Media Café
- Media Shuttle Hub
- Team Captains' Meeting Room

Access to the media centre is granted only to **accredited media**. The Anti **Covid-19** Health Protocol must be compulsorily respected by all those who have the necessary credentials for access. **FFP2 masks at all the time and Enhanced Green Pass are mandatory.**

Opening hours

The Media Center will be operating:

- Wednesday January 19th: 03.00pm - 06.00pm;
- From Thursday January 20th to Saturday January 22th: 07.30am - 07.30pm;
- Sunday January 23th: 07.30am - 04.00pm

HEALTH PROTOCOL

HEALTH PROTOCOL AVAILABLE [HERE](#): PLEASE READ IT CAREFULLY AND APPLY TO IT.

Since it's estimated that COVID-19 pandemic wave is going to a peak in Italy in the next weeks, the FIS Alpine Women World Cup in Cortina d'Ampezzo, organized on January 20th-23rd, 2022, must take place under strict safety measures. Based on the current regulations published by the Ministry of Health, the Presidency of the Council of Ministers and the local Prevention Authorities, as well as the additional measures taken by the FIS and FISI (NSA), we present the following catalogue of measures to be observed by all.

MEDIA FACILITIES

PRESS RELEASES

All the press releases are available on the website www.cortinaskiworldcup.com Please send an email to press@cortinaskiworldcup.com to be in our mailing list.



PHOTO

All the photos, free for editorial uses, can be published with the photo credits mentioned in the files' names. [You can find them here!](#)

PRESS CONFERENCES

Due to the Covid-19 pandemic and national rules, there will be no press conferences with the athletes. The medallists will stay a bit longer in the mixed zone for media interviews.

MIXED ZONE

Access to the mixed zone is granted only for accredited media. In this area it's compulsory:

- to properly wear the FFP2 mask (nose and mouth both covered) all the time;
- to maintain a safe distance in between each other;
- For interviews with the athletes, suitable equipment to maintain the distance from the athletes and always wear the FFP2 mask;
- to wear the face mask also during the interviews;

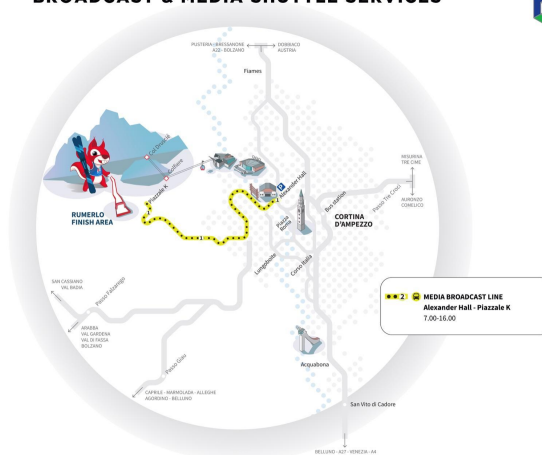
It's forbidden to invite people without access credentials in the mixed zone (media side of the corridor) for interviews or any other reason.

PARKING AND MEDIA SHUTTLE

In order to follow our sustainability philosophy we invite you to park your car at your hotel. If you need to use the car, we have a restricted number of **parking slots available** near by the Media Center. The **media shuttle service** is operational all day long, connecting the Media Center to the Olympia delle Tofane finish area (approximately 15 min): **we remind you there is no reserved media parking at Rumerlo area.**



BROADCAST & MEDIA SHUTTLE SERVICES



[Download PDF file here!](#)



IMPORTANT INFORMATION - SKI PASS

If you need to access the slopes, you will receive a ski pass to use the ski lifts. Following the indications given by national regulations, the ski pass is nominal and for personal use only and cannot be transferred to third parties as it is linked to the personal Enhanced Green Pass. Once you get the ski pass, it must be linked to your Enhanced Green Pass on the Dolomiti Superski app. Here is the link for downloading the app and related instructions: <https://www.dolomitisuperski.com/Discover/Mobile-app>

ORG CHART

You can find our team members [here](#)!

If you need any help from the Press Team, please contact:

Ilario Tancon

Press Office

M. +39 347 0722684

press@cortinaskiworldcup.com

Lucia Del Favero

Digital&Communication Consultant

M. +39 3938119892

lucia.delfavero@fondazionecortina.com

PROGRAMME

THURSDAY 20.01.2022

11.00 1st Official Training – Olympia delle Tofane

FRIDAY 21.01.2022

11.30 2nd Official Training – Olympia delle Tofane

SATURDAY 22.01.2022

11.30 Audi FIS Ski World Cup Cortina d'Ampezzo Downhill Women

Followed by Award Ceremony – Finish Area

SUNDAY 23.01.2022

11.45 Audi FIS Ski World Cup Cortina d'Ampezzo Super G Women

Followed by Award Ceremony – Finish Area



CORTINA
FIS SKI WORLD CUP



ADDITIONAL EVENTS

SATURDAY 22.01.2022, PIAZZA ANGELO DIBONA (MAIN SQUARE)

11.30 am | Live Downhill

5 pm | Ski Club Award Ceremony by FIS - Veneto Committee

5.45 pm | Official Presentation FIS Ski Race Genie, the new web app for the fan entertainment

6.15 pm | Cortina Ski World Cup 2022 entertainment

SUNDAY 23.01.2022, PIAZZA ANGELO DIBONA (MAIN SQUARE)

11.45 am | Live Super G

Organized in collaboration with CortinaforUs and Cortina d'Ampezzo Municipality.

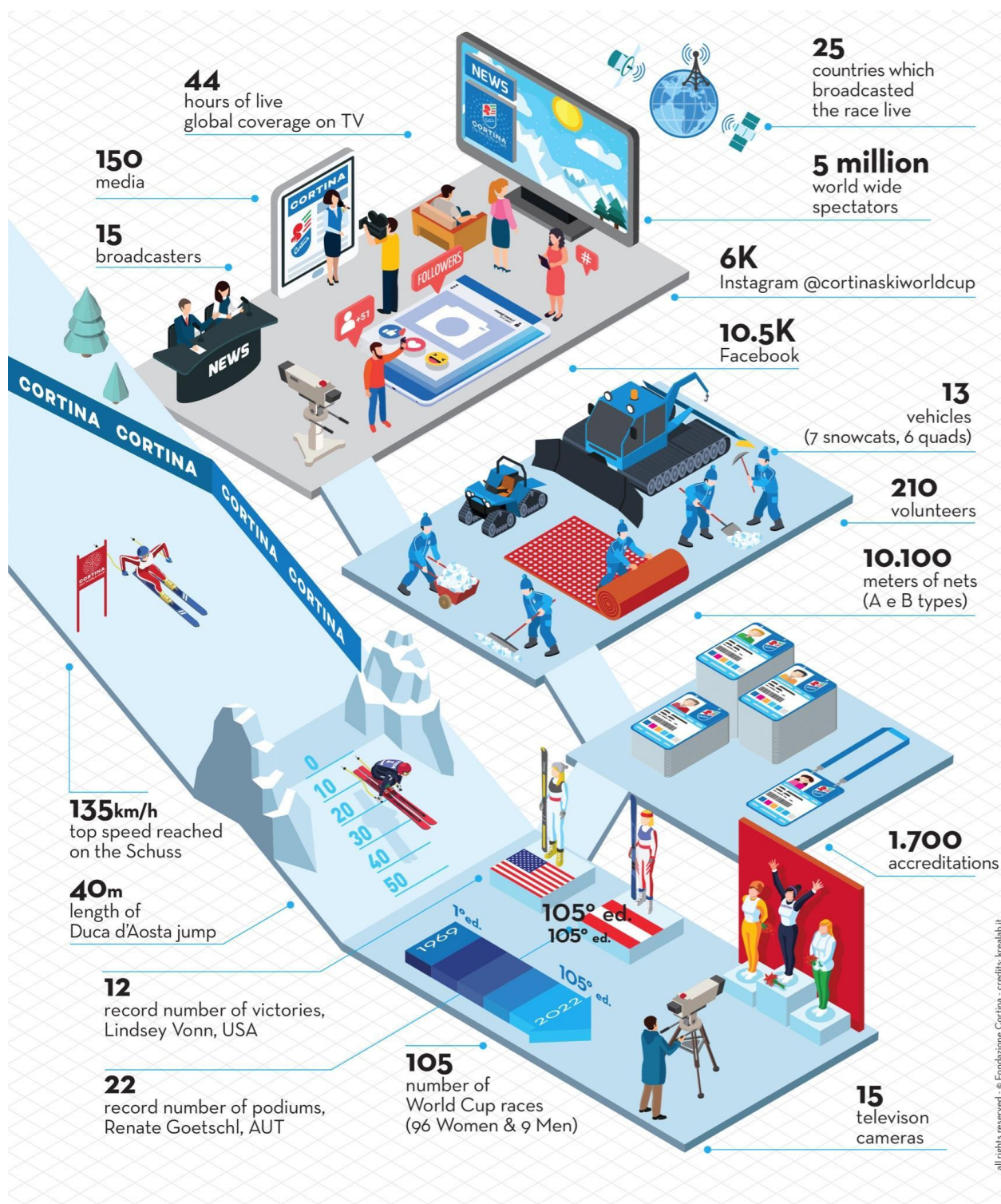
CORTINA SKI WORLD CUP

via Marangoi, 1 - 32043 Cortina d'Ampezzo | cortinaskiworldcup@fisi.org | cortinaskiworldcup.com

CORTINASKIWORLDCUP.COM



WORLD CUP FACTS & FIGURES



© Fondazione Cortina - credits: brealab.it

CORTINA SKI WORLD CUP

via Marangoi, 1 - 32043 Cortina d'Ampezzo | cortinaskiworldcup@fisi.org | cortinaskiworldcup.com



WALL OF FAME

DISCESA LIBERA			
2019	Ramona	Siebenhofer	AUT
2019	Ramona	Siebenhofer	AUT
2018	Sofia	Goggia	ITA
2018	Lindsey	Vonn	USA
2017	Lara	Gut	SUI
2016	Lindsey	Vonn	USA
2015	Lindsey	Vonn	USA
2015	Elena	Fanchini	ITA
2014	Tina	Maze	SLO
2014	Maria	Riesch	GER
2013	Lindsey	Vonn	USA
2012	Daniela	Merighetti	ITA
2011	Maria	Riesch	GER
2010	Lindsey	Vonn	USA
2009	Dominique	Gisin	SUI
2008	Lindsey	Vonn	USA
2007	Renate	Goetschl	AUT
2006	Renate	Goetschl	AUT
2005	Renate	Goetschl	AUT
2005	Michaela	Dorfmeister	AUT
2004	Hilde	Gerg	GER
2004	Carole	Montilet	FRA
2003	Renate	Goetschl	AUT
2002	Renate	Goetschl	AUT
2001	Isolde	Kostner	ITA
2000	Regine	Cavagnoud	FRA
1999	Regine	Cavagnoud	FRA
1998	Isolde	Kostner	ITA
1997	Isolde	Kostner	ITA
1997	Heidi	Zurbriggen	SUI
1996	Picabo	Street	USA
1996	Isolde	Kostner	ITA
1995	Picabo	Street	USA
1995	Michaela	Gerg Leitner	GER
1994	Katja	Seizinger	GER
1993	Regine	Heusl	GER
1993	Katja	Seizinger	GER
1976	AnneMarie	Pröll	GER
1975	Evi	Mittermaier	AUT

SUPER G			
2019	Mikaela	Shiffrin	USA
2018	Lara	Gut	SUI
2017	Ilka	Stuhec	SLO
2016	Lindsey	Vonn	USA
2015	Lindsey	Vonn	USA
2014	Lara	Gut	SUI
2014	Elisabeth	Görgl	AUT
2013	Viktoria	Rebensburg	GER
2012	Lindsey	Vonn	USA
2011	Lindsey	Vonn	USA
2011	Lindsey	Vonn	USA
2010	Lindsey	Vonn	USA
2009	Jessica	Vikarby Lindell	SWE
2008	Maria	Riesch	GER
2008	Maria	Holaus	AUT
2007	Julia	Mancuso	USA
2006	Anja	Paerson	SWE
2005	Renate	Götschl	AUT
2005	Renate	Götschl	AUT
2004	Renate	Götschl	AUT
2004	Genevieve	Simard	FRA
2003	Renate	Götschl	AUT
2003	Carole	Montillet	FRA
2002	Hilde	Gerg	GER
2001	Regine	Cavagnoud	FRA
1999	Renate	Götschl	AUT
1999	Regine	Cavagnoud	FRA
1998	Melanie	Suchet	FRA
1998	Katja	Seizinger	GER
1997	Isolde	Kostner	ITA
1994	Katja	Seizinger	GER
1994	Alenka Dovzan/Pernilla Wiberg		SLO/SWE
1993	Ulrike	Maier	AUT

Campionati del mondo Cortina 2021			
DISCESA LIBERA			
2021	Corinne	Suter	SUI
2021	Kira	Weidle	GER
2021	Lara	Gut-Behrami	SUI
SUPER G			
2021	Lara	Gut-Behrami	SUI
2021	Corinne	Suter	SUI
2021	Mikaela	Shiffrin	USA



OLYMPIA DELLE TOFANE





FINISH AREA





TICKETS

	SATURDAY	SUNDAY
Parterre	10€	10€
Tribuna	25€	25€

All areas open to the public will be available at 50% of the maximum capacity:

- 500 people in the grandstand;
- 500 persone in the parterre.

Nominal ticket + Super Green Pass requirement and **FFP2 mask** worn properly at all event locations.

Tickets can be purchased exclusively online on the official website of the event:

www.cortinaskiworldcup.com

Additional **benefits** for ticket holders:

- **Free parking** at Acquabona. The park slot must be booked on [parkforfun](#).
- **Free shuttles** on a continuous cycle from Acquabona to Socrepes.
- **Chairlift** from Socrepes to the arrival area is free for ticket holders!
- Opportunity to purchase a [busforfun](#) ticket at an affordable price from the following locations:
 - Padova / Mestre / Treviso / Cortina
 - San Candido / Dobbiaco / Cortina
 - Feltre / Belluno / Ponte nelle Alpi / Longarone / Cortina
 - Milano / Bergamo / Brescia / Verona / Cortina

During race days ONLY the Olympia slope is closed. Other slopes in ISTA Ski Area still open.



MOBILITY

By car

Park your car at the south entrance of Cortina ("Acquabona" area). Free reservation is mandatory on [parkforfun](#). From here, **non stop running shuttles** will take you to Gilardon near the chairlift bottom station of Socrepes. From here, **1 chairlift and 10 minutes walk** will take you to the finish area of Rumerlo.

From Acquabona to the finish area: approx. 50 minutes

Shuttle and chairlift free of charge for ticket owners.

Winter clothing and shoes are strongly recommended.

Don't forget to book your car spot on [parkforfun.it](#) [Click here!](#)

By bus

Book on [busforfun](#) your ticket to come to Cortina and watch the races. There are different **bus lines dedicated** to the Cortina World Cup Event:

- Padova / Mestre / Treviso / Cortina
- San Candido / Dobbiaco / Cortina
- Feltre / Belluno / Ponte nelle Alpi / Longarone / Cortina
- Milano / Bergamo / Brescia / Verona / Cortina

Each bus line has its terminal in **Gilardon**, next to the **Socrepes chairlift** bottom station. From here, **1 chairlift and 10 minutes walk** will take you to the finish area of **Rumerlo**.

Check and book your [busforfun](#) here!

If you stay in Cortina

Catch the **bus line n°3** from Cortina bus station (Marconi street, city centre), running every 30 minutes. The bus takes you to **Gilardon**, next to the Socrepes chairlift bottom station. From here, **1 chairlift and 10 minutes walk** will take you to the finish area of **Rumerlo**.

From the bus station to the finish area: approx. 40 minutes

Bus ticket and chairlift free of charge for event ticket owners

Skiing



CORTINA

FIS SKI WORLD CUP



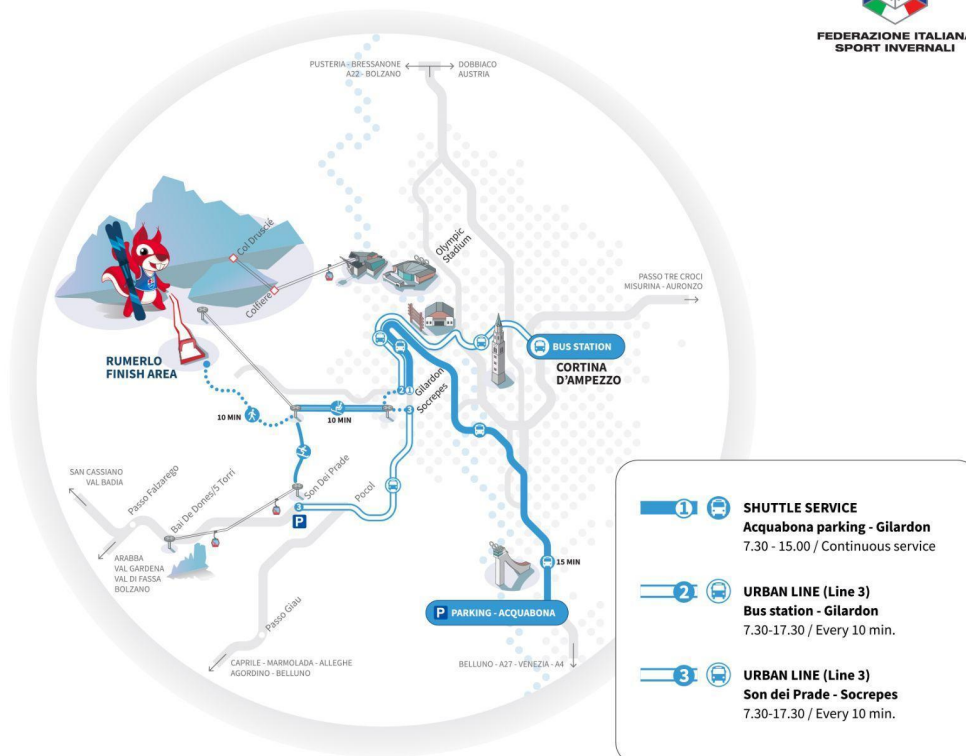
From the center of Cortina by *Tofana Freccia nel cielo* Gondola (near the Olympic Ice Stadium). From the top station - Col Druscié - you can easily ski down to the Rumerlo finish area.

From Passo Falzarego: take the *Bai de Dones gondola to Son dei Prade* and from here, through slope n. 19, ski towards the Tofana Express chairlift bottom station, then ski down to the Rumerlo finish area.

VERY IMPORTANT: DURING THE RACE DAYS, THE ONLY CLOSED SLOPE IN THE TOFANA SKI AREA IS OLYMPIA DELLE TOFANE (RACE COURSE). ALL OTHER SLOPES ARE REGULARLY OPEN FOR SKIING.



SPECTATORS MOBILITY RUMERLO RACES



CORTINA SKI WORLD CUP

via Marangoi, 1 - 32043 Cortina d'Ampezzo | cortinaskiworldcup@fisi.org | cortinaskiworldcup.com

CORTINASKIWORLDCUP.COM





CORTINA

FIS SKI WORLD CUP



SPONSORS & PARTNERS

MAIN SPONSOR

 Audi FIS Ski World Cup		 150 YEARS		
			Promoted by 	

SPONSOR TECNICI E DI LOCALITÀ

	 GRUPPI ELETTROGENI GENERATING SETS	 CREDITO COOPERATIVO ITALIANO		
	 PROSECCO DOC ITALIAN GENIO		 100% latte italiano, LOCALE di casa tua	
 STAGING COMPANY	 DR. LEITNER			 LIFE IN MOTION

CON IL PATROCINIO E IL CONTRIBUTO

 FEDERAZIONE ITALIANA SPORT INVERNALI		 COMUNE DI CORTINA D'AMPEZZO COMUN DE ANPEZZO	 Veneto The Land of Venice www.veneto.eu	 Provincia belluno dolomiti
			 THE MOUNTAINS OF VENICE	

CORTINA SKI WORLD CUP

via Marangoi, 1 - 32043 Cortina d'Ampezzo | cortinaskiworldcup@fisi.org | cortinaskiworldcup.com

CORTINASKIWORLDCUP.COM

